

Certificate of Analysis

Company: Formulation Station 110 Elm Court Colchester, VT 05446	Sample ID: Moksha Trifecta Tincture Lot: MANU003523MOKSHATRI01 Matrix: Oil	Report Date: 4/10/2023 Date Analyzed: 4/10/2023 Analyst: 011 Report ID: C230331AU
Customer ID: 190830-15	Date Sampled: N/A	
Grower License #: #4182109033158806422	Date Received: 3/31/2023	

Cannabinoid Summary

Cannabinoid Profile	LOQ (mg/g)	Concentration (mg/g)	Weight (%)
CBDVA	0.0005	<LOQ	<LOQ
CBDV	0.0012	<LOQ	<LOQ
CBDA	0.0008	<LOQ	<LOQ
CBGA	0.0008	<LOQ	<LOQ
CBG	0.0019	17.04	1.70
CBD	0.0019	17.62	1.76
THCV	0.0021	<LOQ	<LOQ
CBN	0.0013	<LOQ	<LOQ
Δ9-THC	0.0020	15.68	1.57
Δ8-THC	0.0019	<LOQ	<LOQ
THC-A	0.0034	<LOQ	<LOQ
CBC	0.0024	<LOQ	<LOQ
Total THC		15.68	1.57
Total CBD		17.62	1.76
Total Cannabinoids		50.34	5.03

1.57%

Total THC

1.76%

Total CBD

5.03%

Total Cannabinoids

1.57%

Δ9-THC

N/A

Percent Moisture

1 : 1.1

THC : CBD Ratio

Cannabinoids Methodology: High Performance Liquid Chromatography (HPLC) using PerkinElmer FLEXAR™ with Photo Diode Array Detector (PDA)

Total CBD and total THC are calculated values, to account for assumed decarboxylation from the acid form (THCA or CBDA) to the neutral form, causing weight loss of the acid group. These values are calculated as follows:
 Total THC = (THCA x 0.877) + Δ9-THC Total CBD = (CBDA x 0.877) + CBD
 Ratio of Total CBD: Total THC Reagent Blanks: < LOQs for all analytes

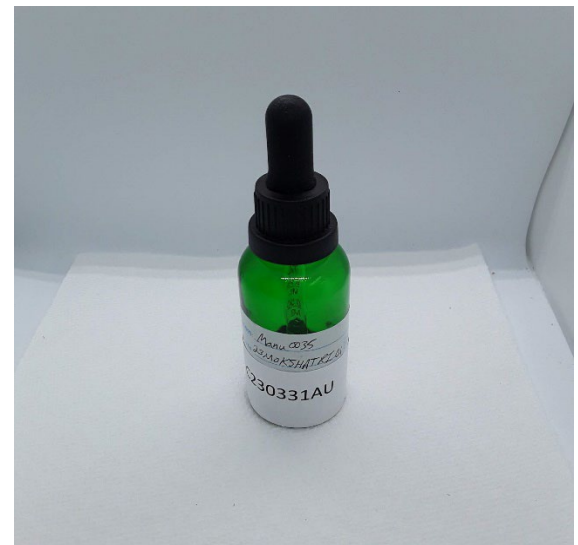
LOQ = The lowest quantity that this method can reliably detect. Any cannabinoid that was not detected is assumed to be less than the stated LOQ (<LOQ).

All results reflect dry weight of material, based on % moisture of the sample.

Measurement of Uncertainty (MU): the parameter, associated with the result of a measurement, that characterizes the dispersion of the values that could reasonably be attributed to the particular quantity subject to measurement.
 Δ9-THC MU = ±0.005% Total THC MU = ±0.007%

All other cannabinoid MU values are available upon request.

All moisture analysis is determined by loss-on-drying measurement using OHAUS Model MB90 Moisture Content Readers.



This report shall not be reproduced except in full without approval of the laboratory. This is to provide assurance that parts of a report are not taken out of context. Results apply to the samples as received.

Certified by: *Luke E. M.*
 Luke Emerson Mason (Laboratory Director, Bia Diagnostics)